

ANNUAL REPORT 2015 (Short version)



NATIONAL AND UNIVERSITY LIBRARY OF ICELAND



Part of the staff November 14th 2015.

National and University Library of Iceland: ANNUAL REPORT 2015.

ISSN 2298-8785.

Editor: Ingibjörg Steinunn Sverrisdóttir.

Layout: Erla Bjarnadóttir.

Cover illustration: Painting of the aluminium shield covering the Library building in June 2015.

Photographs: Helgi Bragason, Ólafur J. Engilbertsson, Ragna Steinarsdóttir, Ingibjörg Bergmundsdóttir and Ingibjörg Steinunn Sverrisdóttir.



FOREWORD FROM THE NATIONAL LIBRARIAN



The National and University Library of Iceland's aim is to be a source of knowledge for everyone. It serves the Icelandic community in all areas of reference and academic discipline and plays a leading role in the collection, preservation and dissemination of information, thus making a vital contribution to culture, research and creative work.

The operating balance of the Library was slightly negative. A deficit of 5 m.kr. was planned, but it ended in 8.3 m.kr. Wages increased after new collective agreements, but the Library was compensated. External funding was higher than expected, mostly grants for exhibitions and events. A special funding of 40 m.kr. was provided for renovation of the ventilation system, and was allocated to FSR (Government Construction Contracting Agency).

Vacant positions have not been filled except where strictly necessary, which reduced staffing positions (FTE's) by 0.27. Travel, training and conferences were minimal. Maintenance on the red shield of the Library building started, and half of it was painted and the work will continue next year. The reference desk and the circulation desk on the 2nd floor were merged into one service desk at the end of the year, with a selfcheck unit for circulation and a new security gate. A new operating system for the ventilation system was installed and also a stronger WiFi access for patrons.

The most extensive single project was the implementation of the RDA cataloguing standard for libraries in cooperation with Landskerfi bókasafna (Consortium of Icelandic Libraries) and a number of other libraries, and it is planned to end midyear 2016. Among other milestones was the opening of the exhibition *We cheerfully salute the future* with a seminar on May 16th commemorating the centenary of women's suffrage in Iceland and simultaneously the opening of the website *konurogstjornmal.is* (Women and Politics). Another big project was participation in the exhibition *Sjónarhorn* (Points of View) in the Culture House in Hverfis-

gata, in cooperation with the main state cultural institutions. The organizational chart was revised, as well as human resources policy and staff training policy. A series of lectures on Icelandic book history continued during the winter 2015-2016, and preparations for the repository Opín vísindi (Open Science) and a CRIS system for Iceland started.

Among special events was the opening of the issue 43 (2) 1983 of the journal *Spegillinn*. After a revision of general criminal laws by Althingi the issue was opened in digitized format on *timarit.is* and made available in paper in the Library. The issue was banned when published, because of blasphemy. Two anniversaries were celebrated, 75 years since the University Library was opened November 1st 1940 and 40 years since the Women's History Archives were founded January 1st 1975.

TARGET AGREEMENT

Under the performance targets agreed on in 2005 between the Library and the Ministry of Education and Culture, the main emphasis has been on the Library's role as an information provider. A revision of the performance targets has been discussed, but not carried out. The focus is on the Library's roles as a digital national library and a digital research library. Work was done on the following tasks under these headings during the year:

DIGITAL NATIONAL LIBRARY

Digitization of Icelandic materials

The website Hljóðsafn (Sound Archive) contained 17.896 sound recordings, both musical and oral, at the end of the year, but the main part is only accessible in the Library. In total, 215 thousand pages were digitized. The total number of digitized pages available on *timarit.is* surpassed 5 million at the end of the year. On the website *handrit.is* more than 1900 digitized manuscripts were accessible, a total of 434.000 pages, and on the website *baekur.is* nearly 1.200 titles were accessible, a total of 373.000 pages. The Icelandic bibliography 1534-1844, was connected to *baekur.is*, thus linking detailed bibliographical records to each digitized publication from the period. On *islandskort.is* 771 maps of Iceland from 1544-1951 are accessible in more than a thousand editions.

Reception and harvesting of digital material

Icelandic websites are harvested on a regular basis and accessible at *vefsafn.is*. It currently contains about 3.405 million documents and the quantity of

data is 71 terabytes. At the end of the year about 54.000 URL's belonged to the .is domain. *Rafhladan.is* is a repository for Icelandic born digital legal deposit material. It is either collected by library staff, or individuals, institutions or companies can deliver material. It hosts around 9.000 entities.

Catalogues, bibliographies and databases

The Library participates actively in the development of *gegnir.is* the library system for most libraries in Iceland, and *leitir.is* which is a discovery service for a broad range of resources. Part of the material is accessible in digital format. It comes from libraries and other bodies, and the aim is to add more from museums and archives. The database Lykilskrá (Keywords), which was opened last year, contains more than 11.000 standard Icelandic keywords and 78.600 names or authority files. The website *einkaskjal.is* (Personal Archives) was opened in 2016 with more than 200 registrations available at the end of the year. Another website related to personal archives, *einkaskjalasafn.is* was also opened, but the aim is to compile a nationwide catalog for Icelandic archives. 5.000 records were in the database at the end of the year.

DIGITAL RESEARCH LIBRARY

National Access - ICES

A one-year contract was made for access to EBSCOhost *Premier*, *ProQuest Central*, *SAGE Premier* and *Morgunblaðið*. A four-year contract was made for *Web of Science*. The subscription to *Oxford Music Online* was terminated. The goal is to lower annual price increases and some progress was made. Usage of the ICES subscriptions was similar as last year, but database usage is falling. An agreement to participate in the SCOAP3 project was made, on Open Access of articles in ten journals in the field of High-Energy Physics, in cooperation with CERN. The metadata from ProQuest became accessible in *leitir.is* through Primo Central Index in 2014, but EBSCO has not made such an agreement with ExLibris. Icelandic universities give access to subscriptions in ICES and their own subscriptions through the *Finna tímarit* list, using the SFX link solver and A-Z list, but the metadata comes from Primo Central Index. The majority of the content is also searchable in *leitir.is* which also offers the bX Recommender Service.

Websites and Social Media

22 webs or web services were in operation but some of them are collaboration projects. Google Analytics is used to monitor web traffic. The

average usage in 2015 is 5.500 daily visits, delivering 27.000 pages to the users. Usage by smart devices is 19% but varies between sites. The Library has a Facebook page that is used to announce news and events and it has more than 2.300 friends. Eight units of the Library have their own Facebook pages. The users of Uglan, the intranet of the University of Iceland, can add a Library Link to their personal page.

Áttavitinn – the Compass

Áttavitinn is a new service for university students and researchers. It is a management system for content based on LibGuides from Springshare. The LibGuides refer to search-aides, databases and information materials. 39 guides are available.

Skemman

The Library operates Skemman, an Open Access repository. The project is a collaborative project of Icelandic Universities, containing dissertations and staff research papers. It hosted more than 22.000 files at the end of the year.

Open Access

According to rules issued by Rannís - The Icelandic Centre for Research in 2013, the publishing of research funded by Rannís shall be in Open Access. Rannís referred scientists to *skemman.is* and *hirslan.is* as repositories, but Skemman does not qualify as an OpenAIRE repository according to European standards. The Open Access policy of the University of Iceland approved in 2014, was postponed again because the University did not have a qualified repository. In the autumn the rector of the University of Iceland entrusted the Library to set up a new repository for scientific articles in Open Access. The first edition of Opin visindi (Open Science) was opened in December.

Current Research Information System

Work continued on the purchase of a CRIS system for Iceland in order to keep track of research financing and publications of Icelandic scientists. The Ministry of Education hired a project manager and held a series of meetings with stakeholders. The Library will supervise the registration of metadata and preservation of materials.

This report gives an account of main projects carried out over the year 2015, with statistics reflecting performance, operations and the main figures from the financial statements.

Ingbjörg Steinunn Sverrisdóttir
National Librarian

KEY STATISTICS

At the end of each year, statistics are processed covering users and the services provided, and also the Library's holdings, acquisitions and various aspects of its operations, such as the work of the Photographic Unit and the Bookbinding Unit, staffing levels and the Library's financial position. Some changes have been introduced to the presentation of these statistics, with the aim of simplifying them and bringing them into line with changes in operations. This year statistics are presented in regard of the standard *International Library Statistics, ISO 2789:2013*, and the work will continue in the years to come. Statistics of Library holdings are processed by Consortium of Icelandic Libraries from the library system Gegnir, and more emphasis is on analysis of statistics by gender.

1. NATIONAL LIBRARY – UNITS AND BRANCHES

The National and University Library of Iceland serves the Icelandic people, who counted 332.529 on January 1st 2016, but serves also other customers. It is also the library of the University of Iceland with 12.707 enrolled students in 2015.¹ The Library is one administrative unit, but operations and library holdings are in following locations:

The National and University Library, Arngrímsgata 3, in Reykjavík	1
Reserve Library in Reykholt, in Borgarfjörður	1
Storage in Mjódd, in Reykjavík	1
Data storage at Verne Global in Keflavík	1
Data storage at Advania Thor in Hafnarfjörður	1
Branches and reading rooms in University of Iceland	5
Total	10

2. USERS AND SERVICES

Library users include both those who visit the Library and those who make use of its websites. Guests using the Manuscript Department and National Department reading room are counted; precise counts of other users are not feasible, but surveys are made of users of the open areas on the 3rd and 4th floors in the first week of each month. On weekdays during the university examination season, their numbers can reach up to 300.

2.2 LIBRARY CARDS ISSUED

	2012	2013	2014	2015
Students at the University of Iceland ²	13.311	13.720	12.887	12.707
University and Library staff	657	990	416	373
Other students	297	342	290	304
Other borrowers	930	681	573	771
Total	15.195	15.733	14.166	14.155

¹ Numbers from Statistics Iceland.

² Information of enrolled students at the University is automatically loaded into the library system Gegnir from the Student Registration. This saves a lot of work and time, but separation of active and inactive student users is not possible.

2.3 CIRCULATION

	2012	2013	2014	2015
Circulation - main Library and departmental libraries in the University of Iceland				
Students at the University of Iceland	37.678	34.629	31.892	27.001
University and Library staff	6.671	2.006	5.967	6.010
Other students	2.920	5.990	1.920	1.711
Other borrowers	7.082	6.126	5.343	5.434
Renewals ³				57.942
Total	54.351	48.751	45.122	90.098
National Collections materials used in the Reading Room	5.635	4.545	5.186	4.346
Manuscripts used in the Reading Room	2.780	2.342	2.346	2.102
Audio-visual Collection				
Sound recordings - loans	51	48	41	64
Films and related materials - loans	1.222	1.075	776	621
Digital materials - loans	35	28	22	16
Printed music - loans	125	163	99	90
Sound recordings used on site	168	160	147	112
Films and related materials used on site	254	252	224	186
Total	10.270	8.613	8.841	7.537
Total loans	64.621	57.364	53.963	97.635

2.4 INTER-LIBRARY LENDING AND ARTICLE SERVICES

	2012	2013	2014	2015
To the Library				
Books, films etc.	1.178	1.157	1.101	1.013
Photocopies	1.170	917	1.002	803
From the Library				
Books, films etc.	440	391	365	295
Photocopies	312	517	418	352
Total	3.098	2.982	2.886	2.463
To the Manuscript Collections	24	3	0	3
From the Manuscript Collections	70	52	27	62
Total	94	55	27	65
Total Inter-library loans	3.194	3.037	2.913	2.593

2.5 REFERENCE QUESTIONS - ENQUIRIES HANDLED

	2012	2013	2014	2015
Reference				
By e-mail	566	479	435	544
By phone or in person	193	324	214	162
Extensive reference searches	47	47	45	40
Audio-visual Collections	15	36	27	31
National Collections	17	19	25	32
Women's history archive (visits and enquiries)	277	398	305	465
Center for Oral History	25	26	20	23
Total	1.140	1.329	1.071	1.297

³ Renewals are now more visible in statistics from Landskerfi bókasafna. Renewals can take considerable time and work, therefore the numbers are included. The number of renewals is higher than number of loans.

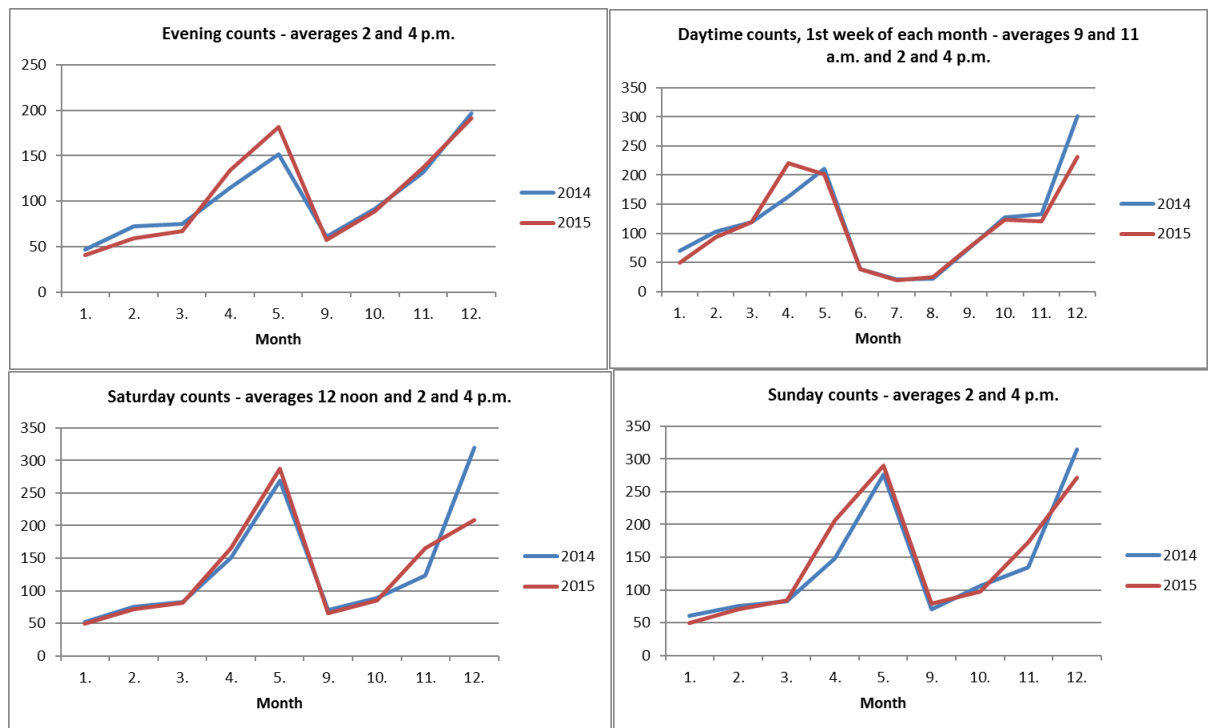
2.6 PRINTING AND PHOTOCOPYING BY LIBRARY USERS

Number of pages	2012	2013	2014	2015
Printed	338.067	217.577	102.050	127.670
Photocopied	175.372	183.127	70.499	73.575

2.9 EVENTS

	2012	2013	2014	2015
Exhibitions	11	11	11	13
Seminars				18
Total				31

2.10 GUESTS USING 3RD AND 4TH FLOORS, 2014-2015



2.10 READING ROOM FOR MANUSCRIPTS AND NATIONAL COLLECTIONS 1ST FLOOR

Guests	2012	2013	2014	2015
Total	5.353	4.190	3.977	3.580

2.10 RENT OF READING ROOMS (MONTHS)

Number of months	2012	2013	2014	2015
Total	317	297	298	312

2.11 USER ORIENTATION AND TRAINING

	2012	2013	2014	2015
Number of users attending training courses				
Introductory courses for UI staff/students	996	1.027	1.386	1.634
Advanced courses for UI staff/students	736	841	1.146	864
Others - Endnote 326	81	5	25	389
Total	1.813	1.873	2.557	2.887
Number of training courses				
Introductory courses for UI staff/students	46	42	38	45
Advanced courses for UI staff/students	47	23	39	28
Others - Endnote 15	4	1	2	18
Total	97	66	79	91

2.12 USE OF ELECTRONIC RESOURCES AND SERVICES

Articles downloaded:	2012	2013	2014	2015
Via ICES ⁴	1.261.809	1.177.235	1.243.885	1.134.048
From Morgunblaðið.	2.598.155	2.009.862	1.771.220	1.610.026
Via subscriptions of University of Iceland ⁵	90.513	110.030	83.343	96.822
Total	3.950.477	3.297.127	3.098.448	2.840.896

2.13 VISITS ON THE WEBSITES

	Visits		Page Views	
	2014	2015	2014	2015
timarit.is (Newspapers and journals)	1.042.669	1.011.043	5.938.818	5.841.677
skemman.is (Dissertations - research papers)	533.616	559.178	2.194.067	2.294.651
landsbokasafn.is (Main Library website)	112.102	110.648	269.165	262.588
hvar.is (ICES)	68.045	57.073	125.758	103.647
inngangur.landsbokasafn.is (Intranet)	56.064	55.409	134.285	149.817
vefsafn.is (Archived web pages)	61.447	54.292	352.216	264.686
handrit.is (Manuscripts)	48.950	51.667	241.421	271.527
baekur.is (Books)	24.978	29.198	319.479	359.479
rafhladan.is (Born digital legal deposit)	15.978	21.922	71.667	69.333
jonashallgrimsson.is (The poet Jónas H.)	18.409	20.914	43.264	49.104
kvennasogusafn.is (Women's history archive)	9.333	15.442	19.278	30.607
islandskort.is (Antique maps of Iceland)	13.109	12.659	49.577	49.390
hask.landsbokasafn.is (Cataloguers' handbook)	8.933	9.240	58.909	60.915
einkaskjol.is (Private archives)	1.220	5.091	9.379	30.411
utgafuskra.is (Icelandic national bibliography)	3.256	4.313	8.645	8.507
lykilskra.landsbokasafn.is (Keywords)	4.073	3.922	29.620	19.535
sagas.landsbokasafn.is (Saga translations)	1.709	2.740	9.852	7.863
munlegsaga.is (The Center for Oral History)	1.888	2.482	5.105	7.073
hljodsafn.landsbokasafn.is (Sound archive)	1.759	1.808	28.289	29.109
konurogstjornmal.is (Women and politics)		1.806		4.553
doktor.landsbokasafn.is (Icelandic Phd's)	1.682	1.342	18.778	12.526
bokaskra.landsbokasafn.is (Icelandic bibliogr.)	470	1.319	4.586	8.018
Total 22 vebservices	2.028.470	2.033.508	9.922.779	9.935.016

⁴ Further information on the use of the national licences can be found in the annual report of ICES on the website *hvar.is*.

⁵ It is difficult to get reliable figures on the use of some of the University's subscriptions and the data is unstable. A list of the subscriptions is on page 38 in the Icelandic version of the Annual Report.

2.15 SOCIAL MEDIA

	2012	2013	2014	2015
Social media – number of entries				
Facebook - National and University Library			124	218
Facebook - Manuscript Collections			54	75
Facebook - National Collections			4	25
Facebook - Music and Film Collections			12	8
Facebook - Women's Archives			58	48
Facebook - Center for Oral History			3	13
Facebook - ICES			119	78
Facebook - timarit.is			123	600
Facebook – Women and politics				97
Facebook – Jónas Hallgrímsson				5
Facebook - bækur.is			18	174
Instagram - National and University Library				64
Twitter - National and University Library			420	1.246
Total			935	2.651

3. COLLECTIONS

3.2 STOCK BY UNITS – PROCESSED FROM GEGNIR⁶

Total number of titles	2012	2013	2014	2015
Manuscript Collections	11.608	15.411	15.933	16.016
National and University Library	338.936	343.766	349.984	357.343
National Collections	154.767	158.305	162.385	165.466
Branch at Lögberg	9.271	9.026	9.184	9.295
Branch at Náttúrufræðihús	1.223	0	4	2
Branch at VR II	2.224	2.089	2.082	2.074
Research Centres of UI	0	5.454	5.443	5.443
Total	518.029	534.051	545.015	555.639
Total number of copies				
Manuscript Collections	13.549	18.134	18.716	18.792
National and University Library	461.015	469.036	477.558	485.884
National Collections	344.531	353.637	364.111	372.156
Branch at Lögberg	12.034	11.966	12.034	12.360
Branch at Náttúrufræðihús	2.730	0	4	2
Branch at VR II	2.383	2.129	2.122	2.113
Research Centres of UI	0	6.724	6.724	6.718
Total	836.242	861.469	881.005	898.025

⁶ New table with statistics from Landskerfi bókasafna.

3.2 NUMBER OF COPIES BY FORMAT 2015 – PROCESSED FROM GEGNIR⁷

Format	Manu scripts	NULI	National collection	Branch Lögberg	Branch Náttúru	Branch VR II	Research Centres	Total
Blu-ray		212	37					249
Book	2.227	444.341	306.394	11.065	2	2.108	6.716	772.85
Datasets		18	15					33
CD		557	13.452	3		4		14.016
CD / audio book		483	1.673					2.156
Manuscript	16.531			1				16.532
LP		4	5.196					5.200
LP / audio book			154					154
Bound journals	16	3.036	7.614	85				10.751
Maps		48	1.379					1.427
Folder		1						1
MP3 / audio book		8	306					314
Video		1.615	641	1				2.257
DVD		3.233	1.093					4.326
Musical scores		4.332	4.083					8.415
Electronic journals		1						1
Slides		10	4					14
Cassettes		279	2.100					2.379
Cassette / audio book		147	863					1.010
Games		3	15					18
Journal issues	18	26.684	26.616	1.198				54.516
Devices			1					1
Computer data		872	382	7		1	2	1.264
Computer files			138					138
Total	18.792	485.884	372.156	12.360	2	2.113	6.718	898.02



The first patron to use the new selfcheck unit for circulation.

⁷ New table with statistics from Landskerfi bókasafna.

3.2.2 ACQUISITIONS

Items received under legal deposit ⁸	2012	2013	2014	2015
Books (printed works registered as books) ⁹	5.260	5.306	7.463	5.863
Periodicals (individual issues)	6.943	5.539	5.216	5.582
Newspapers (individual issues)	7.125	5.944	6.516	6.172
Annual reports	444	396	173	325
Posters	268	99	56	177
Maps	11	18	17	24
Printed ephemera	8.026	6.240	8.726	8.666
Sound recordings ¹⁰	769	356	544	543
Video tapes and DVDs ¹¹	60	29	54	41
Audio books	180	224	217	66
Multimedia discs/computer data	8	8	28	0
Digital items in Skemman	2.207	3.938	3.186	3.156
Digital items in Rafhlaðan	56	2.105	3.781	1.923
Digital items in Hljóðsafn ¹²			10.000	7.869
Web archiving – documents (thousands)	2012	2013	2014	2015
The Icelandic web domain	285.703	277.228	295.721	284.525
Weekly selected archiving	98.171	132.168	132.877	102.371
Event-related collections	1.164	48.513	1.572	2.258
Collection from Internet Archive 1996-2004		47.000		0
Total documents (thousands)	385.038	504.909	430.170	389.154
Other acquisitions	2012	2013	2014	2015
Books, purchased ¹³	3.287	2.900		
Books - NULI Services and University relations			831	640
Books - NULI National Collections			495	288
Books - University of Iceland			1.205	993
Books, donations/exchanges	3.574	3.224	5.501	3.467
Foreign periodicals, paid by Library	582	598	600	590
Foreign periodicals, paid by UI institutions	28	10	7	7
Foreign periodicals, donations/exchanges	300	230	220	170
Periodicals, back-numbers (volumes)	160	57	131	207
Icelandic periodicals, purchased	104	101	111	113
Icelandic periodicals, donated	40	25	25	25
Sound recordings, purchased - Nat. Collection	136	59	159	80
Sound recordings, donated	24	55	51	143
Video tapes and DVDs, purchased	319	95	48	
DVDs - NULI Services and University relations				48
DVDs - NULI National Collections				18
DVDs - University of Iceland				40
Video tapes and DVDs, donations	36	20	105	275
Audio books, donations	2	3	17	7
Databases for NULI, UI and others ¹⁴			30	28
Acquisitions by Manuscript Collection	53	87	74	81
Acquisitions by Women's history archive	11	18	10	22
Acquisitions by Center for Oral History	28	23	9	11

⁸ Counting of the three copies of books, newspapers, audio discs and multimedia discs that are preserved in the Library; but two copies of printed ephemera and posters are counted. The figures for ephemera are estimates.

⁹ Number of registered copies in the National Collections 2015 is based on statistics from Consortium of Icelandic Libraries.

¹⁰ Counting of copies of published sound recordings preserved. Here also titles published by individuals, choirs and bands.

¹¹ Titles.

¹² Hljóðsafn (Sound Archive) was opened December 1st 2014 and a number of sound files were already in the collection.

¹³ Counting of purchased books is has been changed and is more detailed.

¹⁴ NULI paid for or took part in paying 11 databases and schools / faculties of the University of Iceland for 26 databases.

4. ACCESS AND FACILITIES

	2015
Wintertime - opening hours pr. week	80
Summertime - opening hours pr. week	40-44
Days open	320
User places	700
Public access workstations – computers and kiosk services	41
Catalogue records - Gegnir	1.164.188
Number of copies - Gegnir	5.867.957
Photocopiers, printers and scanners	16
Space in squaremetres	
- National and Univeristy Library Building	13.000
- Reykholt	851.4
- Storage in Mjódd	428

5. MANAGEMENT

5.3 PUBLICATIONS

	2012	2013	2014	2015
Promotional material				
New leaflets	7	12	0	0
Re-issued leaflets	23	22	20	7
Guidelines in Áttavitinn			20	19
Exhibition catalogs			4	4
Collaboratives - Utangarðs and Sjónarhorn				2
Brochures			1	2
Report - Stafræn menning				1
Samtals	30	34	40	35

5.4 CONSERVATION AND BINDING SERVICES

	2012	2013	2014	2015
Units	43.275	44.066	48.498	44.315

5.5 DIGITIZATION

Printed material (pages)	2012	2013	2014	2015
Newspapers and periodicals	316.188	163.275	154.065	104.002
Books	54.670	84.545	17.759	67.731
Manuscripts	21.097	15.974	30.247	38.240
Maps	939	190	0	0
Not published on the Library's websites	31.118	3.492	2.300	0
Albums and covers for the Sound Archive			2.091	4.631
Private Archives				198
For Rafhlaðan				95
Total pages	424.012	267.466	206.462	214.897
Sound material (sound files)				
Music				17.491
Interviews				378
Total sound files				17.869

5.6 ISSN AND ISBN

ISSN (International Standard Serial Number)	2012	2013	2014	2015
ISSNs assigned	25	46	117	112
ISBN (International Standard Book Number)				
Registrant element ranges assigned	88	56	71	70
Individual ISBNs assigned	214	228	220	207
ISMN ¹⁵ (International Standard Music Number)				
Registrant element ranges assigned		6	6	3
Individual ISMNs assigned		4	4	3

6. FUNDING AND EXPENDITURE

6.2 OPERATING EXPENSES (ISK '000)

	2012	2013	2014	2015
Payroll	425.890	433.369	479.552	528.066
Acquisitions	297.469	307.702	292.008	302.841
Other expenses	241.158	236.704	247.473	271.666
Total	964.517	977.775	1.019.033	1.102.573
Percentage breakdown %	2012	2013	2014	2015
Payroll	44.2	44.3	47.1	47.9
Acquisitions	30.8	31.5	28.7	27.5
Other expenses	25.0	24.2	24.2	24.6

6.3 INCOME STATEMENT (ISK '000)

Income	2014	2015
University of Iceland's allocation for acquisitions	42.310	40.349
Fees for Icelandic Consortium for Electronic Subscriptions (ICES)	118.166	122.114
Other income	67.523	71.227
Government appropriation	811.623	860.600
Total	1.039.622	1.094.290
Expenses		
Payroll	479.552	528.066
Operation and maintenance of buildings	128.852	144.705
Purchase of acquisitions	69.558	72.379
Icelandic Consortium for Electronic Subscriptions (ICES)	222.450	230.462
Systems (Consortium of Icelandic Libraries. etc.)	23.443	28.181
Operation of computer systems and technical equipment	35.060	34.189
Other expenses	60.118	64.591
Total	1.019.033	1.102.573
Operating surplus	20.589	- 8.283

¹⁵ The Library became an International Standard Music Number (ISMN) agency for notated music in 2013.

7. LIBRARY STAFF

AVERAGE FULL-TIME-EQUIVALENT STAFF PER UNIT

	2012	2013	2014	2015
Administration and IT	17.63	18.13	19.13	21.25
Acquisitions and cataloging	8.50	9.75	9.20	0
National collections and digital conversion	13.05	12.00	12.25	13.25
Communications and electronic access	17.32	18.00	18.15	17.55
Services and university relations	12.88	10.90	11.70	18.11
Total FTE's	69.38	68.78	70.43	70.16
Personnel by category FTE's	2012	2013	2014	
Qualified librarians	24.30	23.55	26.15	27.10
Librarians with university degrees	21.45	21.43	19.43	17.30
Other librarians	11.48	10.90	11.70	12.61
Assistants and office staff	3.00	4.00	3.25	3.25
Other staff	9.15	8.90	9.90	9.90
Total FTE's	69.38	68.78	70.43	70.16



Students using the services of the Writing Center.

GENDER ANALYSIS¹⁶

	2012	2013	2014	2015
Library staff				
Males	34	31	29	31
Females	46	44	51	47
Total	80	75	80	78
Registered borrowers				
Males				4.893
Females				9.121
Unspecified, institutions, companies				138
Total				14.152
Interlibrary lending and article services		2013	2014	2015
Males		1.115	930	986
Females		1.432	1.185	1.129
Unspecified, institutions, companies		435	771	348
Total		2.982	2.886	2.463
Guests in reading room on 1st floor				
Males	3.718	2.925	2.703	2.444
Females	1.635	1.265	1.274	1.136
Total	5.353	4.190	3.977	3.580
Rent of reading rooms (months)				
Males	68	60	71	94
Females	249	237	227	218
Total	317	297	298	312
Topics of exhibitions				
Males				5
Females				2
Unspecified, things, institutions, companies				6
Total				13
Lecturers at seminars				
Males				17
Females				10
Total				27
Highlight of the month				
Males				7
Females				5
Total				12

¹⁶ More emphasis is on analysis of statistics by gender.

